



WAREWASHING
CONTAINER WASHER

FUX-C

EFFICIENT - RELIABLE - INNOVATIVE



 made in germany

MADE IN GERMANY

„Made in Germany“ has been synonymous with quality and reliability in the premium segment for a long time and still is today. A company can only maintain its hold on the market by keeping its promise to continually deliver high quality.

WORLDWIDE

Whether you need a completely new kitchen or a replacement item our competent subsidiaries and partners all over the world would be pleased to support you. It's nice to know we are always there.



1883 Mr. Charles Clarence Hobart builds his first engines and generators in Middletown, Ohio.

1886 J.C. Cochran receives the patent for the first dishwasher.

1897 The HOBART ELECTRICAL MANUFACTURING COMPANY was founded in Troy Ohio, through the acquisition of the engine and generator factory of the HOBART family.

1903 HOBART builds the first food processor (a self-contained powered coffee mill).

1926 HOBART purchases The Crescent Washing Machine Company, and enters the commercial warewashing market: the first warewashing machine carrying a HOBART label.

1930 Foundation of the HOBART MASCHINEN GESELLSCHAFT in Hamburg, Germany.

1953 HOBART receives the patent for the first flight-type dishwasher.

1960 Acquisition of the dishwashing department of the company K. Martin, Offenburg, Germany.

1980 Production plant in Elgersweier, Germany, was newly built.

1986 PREMARK INTERNATIONAL GROUP was formed in Deerfield, Illinois.

1997 HOBART CORPORATION'S 100th anniversary.

1999 Integration of PREMARK into ITW.

2007 HOBART presents its new dishwasher generation PREMAX.



HOBART PHILOSOPHY

UNDERSTAND – SIMPLIFY – FOCUS – INNOVATE

This philosophy provides the continuing motivation to develop innovations, which are the best driver of economic development and a guarantee for job security. It is a philosophy of the essential, of customer value, of simplicity. A philosophy built on the conviction that things created for a purpose and with logic, do not need to be completely renewed, but must instead be subject to continuous evolution.

HOBART VISION

“WASH WITHOUT WATER“

Before PREMAX, a flight-type dishwasher with a 50% water saving would have been utopia. At HOBART, efficiency and responsible use of natural resources when developing new machines have always gone hand in hand. With PREMAX, the company has set a further milestone, and has further extended its leadership in innovation. But even so, HOBART is not satisfied with this. The company will not diminish the pace of its innovation, and will look for further opportunities to save even more. When the day arrives that a machine is able to wash without water, we already know, it will be a PREMAX.

HOBART FOCUS

INNOVATION

Without the readiness to invest in the future, without the natural reaction of always questioning ourselves, without interdisciplinary basic research and consistent customer focus, PREMAX would be inconceivable. Worldwide, over 300 research and development engineers and global marketing teams, who identify customer requirements, as well as the company's own Tech-Center, with over 1,000 patent applications annually, develop innovative technology and make PREMAX possible.

ECOLOGY

The HOBART environmental protection program CO₂NSEQUENT has been in existence for some time. The program includes a large number of measures that are all related to protecting the environment. These measures are implemented in production, purchasing, the development and sale of products and in additional projects.

ECONOMY

Already in the early 1980s our E-formula set standards in energy saving and recovery which are still unique today. This innovative spirit found its fulfillment in the PREMAX line. The PREMAX flight-type dishwasher saves up to 50% water, 30% energy, and 80% chemicals in comparison with conventional technologies, making HOBART a model in terms of efficiency and economy.



1

2

1 "To me, a container washer is more than just a means to an end – it has to give me a clean, hygienic wash and it has to be easy to use. HOBART FUX-C fills the bill on both counts."

3

4

2 "Power and water prices have been on the up for years, something we're acutely aware of with the amounts we use. Operating costs are a major factor in buying decisions when it comes to new equipment. We've found the right solution in HOBART FUX-C."

3 "Our power costs depend on peak consumption. We need equipment with low input wattage to cut these costs; HOBART FUX-C has the lowest consumption rates on the market."

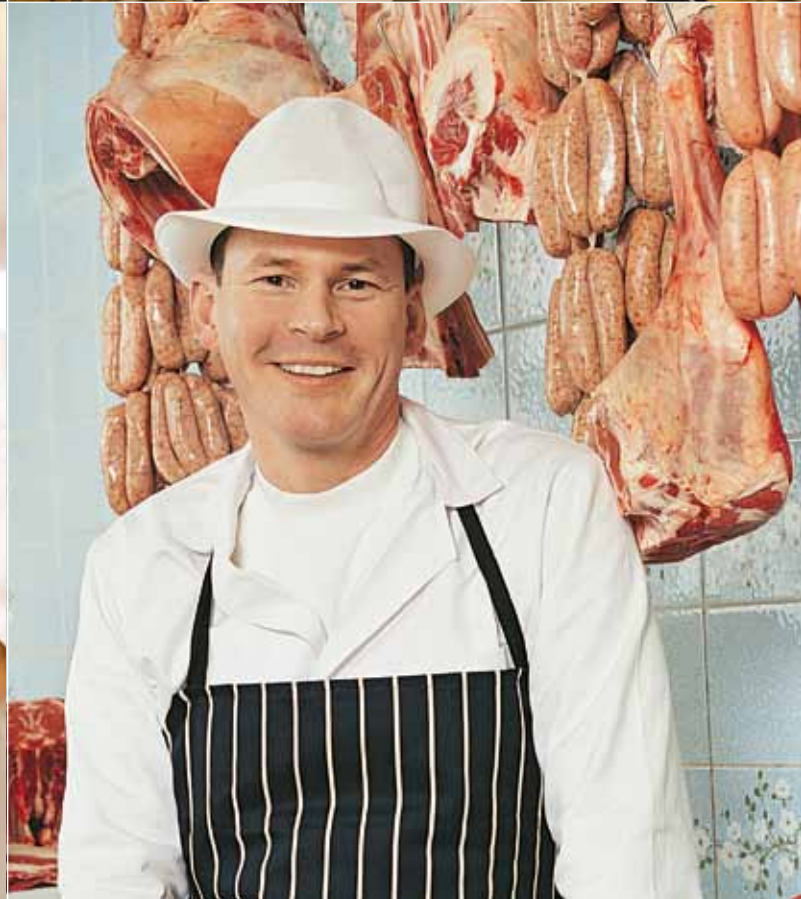
4 "Hygiene is everything here, and HOBART FUX-C is a reliable workmate."

Pierro Sola
Butchery,
Madrid, Spain

Maxime Rifaud
Bakery,
Strasbourg, France

Manuel Hug
Bakery,
Bonn, Germany

Bob Sean
Butchery,
Kilkenny, Ireland



1 | ECONOMY

LOW WATER CONSUMPTION

The main purpose of fresh-water rinsing is to clean the remaining detergents off your washware. Fresh water distribution inside the machine plays a decisive role in the amount of water used; an optimised rinsing system arrangement with precision nozzles effectively reduces water consumption by up to 20% down to 250 litres per hour compared to conventional machines. This cuts fresh-water rinse and power consumption in the machine.

LOW POWER CONSUMPTION

Exceeding agreed peak power consumption limits leads to disproportionately high increases in electricity bills. Decreased water consumption reduces power consumption and the machine's input wattage, thus reducing additional costs due to exceeded peak limits as well as operating costs.

VENTILATION-AIR HEAT RECOVERY

Optional ventilation-air heat recovery functions according to the countercurrent principle, using the energy from the extracted air. The energy exchange takes place in the HOBART high-performance condenser. At the same time, the extracted air is cooled down and dehumidified. The HOBART ventilation-air heat recovery system reduces energy consumption by up to 8.75 kW and total connected load by up to 21 kW. This represents a saving of up to 1,470 euros per year*.

OPERATING COST CALCULATION

	STANDARD TECHNOLOGY	FUX-C
Energy per year	9.370 €	4.215 €
Water per year	2.885 €	1.375 €
Chemicals per year	7.185 €	3.400 €
CO ₂ emissions	36.700 kg	17.220 kg
Total costs	19.440 €	8.990 €
Savings in operating costs		10.450 €

*Calculation based on operation 4 hours per day and 300 days per year

THRIFTY – ECOLOGICAL



FUX-C reduces water consumption by up to 20%.

ECONOMIC – EFFICIENT



HOBART heat recovery saves up to 1,470 Euro per year.

HOBART

2 | WASH RESULT

BLOW DRYING B

Plastic is a poor heat store; crates, containers and trays have poor self-drying characteristics, leaving large amounts of water on the washware after rinsing – water that will drip onto the floor and collect in front of the machine as you take the washware out. On the one hand, this creates a slippery surface hazard for the operator, and on the other, the water lost needs to be fed back into the machine. HOBART blow drying reduces the amount of water remaining on these articles with two high-power fans blowing air onto the washware. Two fanned nozzles above and below create a powerful stream of air that blows most of the water off, eliminating puddles in front of the machine and keeping the water where it belongs – inside the machine. HOBART blow drying reduces the amount of water left on containers by up to 90%, and the washware dries off more quickly.

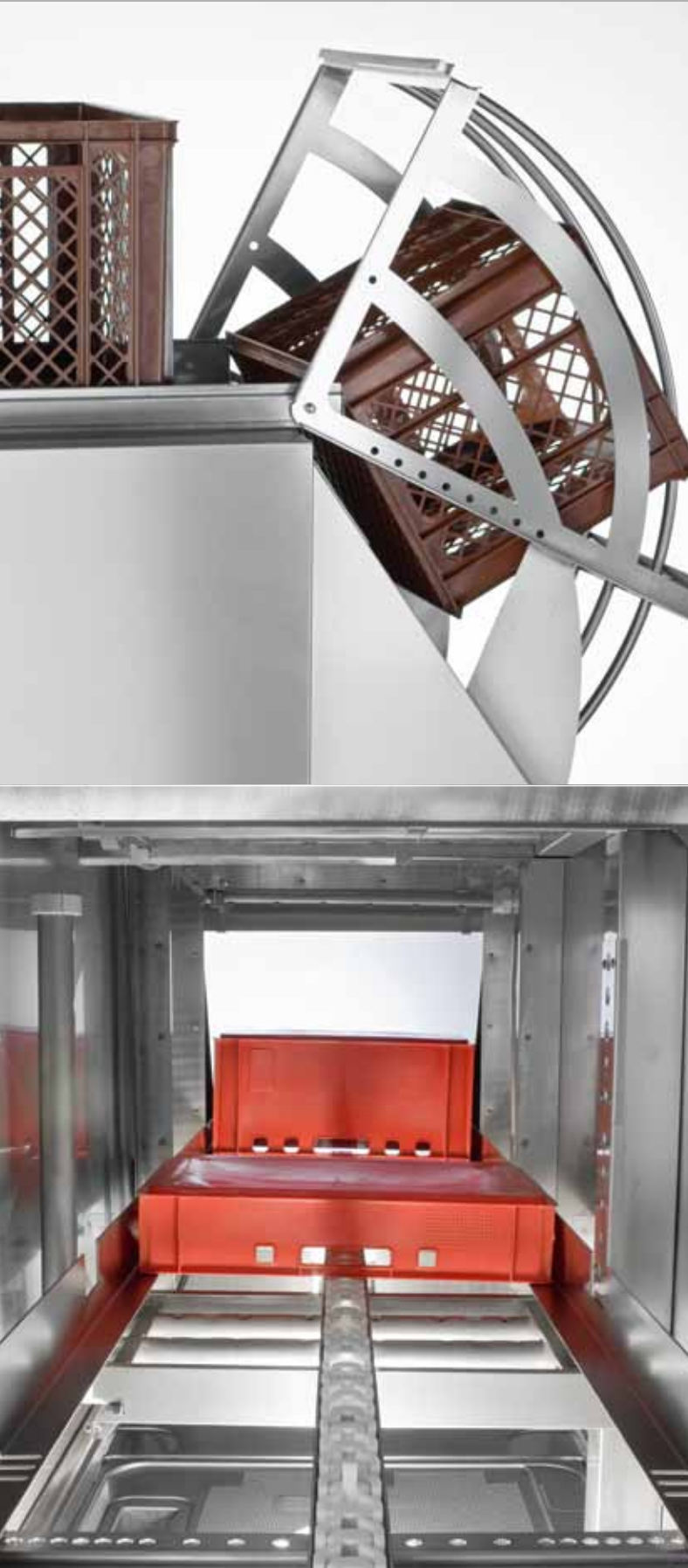
HIGH CAPACITY

The faster the wash, the better the performance. The washing system with optimised FAN wide-angle nozzle arrangement from above, below and from the side give you ideal water distribution in the machine; water reaches every corner of your washware at high pressure, giving you a very fast wash at up to 300 racks per hour.

PERFORMANCE – POWERFUL



HOBART blow drying gives you a significantly faster drying result on your washware.



3 | HANDLING & RELIABILITY

CHAIN CONVEYOR SYSTEM

The more direct the route the detergent takes to reach your washware, the better your wash result. Our chain conveyor system optimises detergent application, as the system dynamically places the detergent straight onto the washware and prevents blind spots, ensuring the best possible result.

INCLINATION

Crate and rack bases lose shape with time, leaving water and soil on washware items horizontally positioned. Fitted as standard, washware inclination during conveyor transport through the machine prevents water and soil being carried through, thus optimising the washing and rinsing result.

SOIL TRAP

Washing results deteriorate with increasing amounts of soil carried through the wash. The optional integrated soil collector system separates the soil from the washware before washing, taking it straight into the drain and preventing soil from entering the wash. The soil trap ensures the washing result required.

HYGIENIC – CLEAN



Washware inclination fitted as standard optimises the wash and rinse result.

EASYTRONIC

Control is simple and intuitive. Simply switch the machine on and off, and leave the machine to do the rest. Temperature gauges for the washware are available as an optional extra.

TURNING SYSTEM

The turning system provides ideal conditions for single-operator control at less busy times. The racks are placed onto the feed track into the machine on reaching the discharge track, turned, cleaned, and taken back off the discharge track.

EASY-TO-CLEAN INTERIOR

Smooth surfaces in the interior and completely recessed tanks with rounded corners reduce the number of hygienic problem zones. The wide-area door gives easy access to the interior for fast and easy cleaning.

DROP-IN WASH SYSTEM

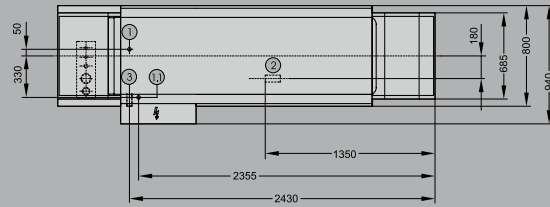
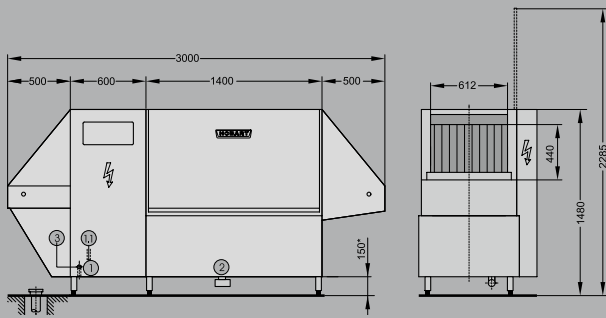
Simple wash system removal and replacement.

TRIED-AND-TRUSTED MATERIALS

The container washer comes in chrome-nickel steel, ensuring long life.

INTELLIGENT DESIGN

Decades of experience in designing container washers mean that all of the components match one another. This intelligent design ensures extremely high levels of reliability.



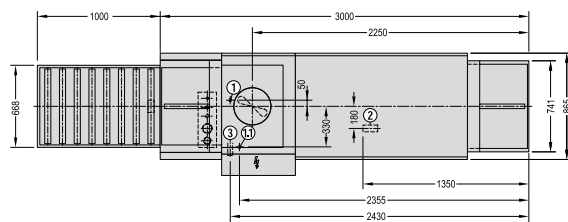
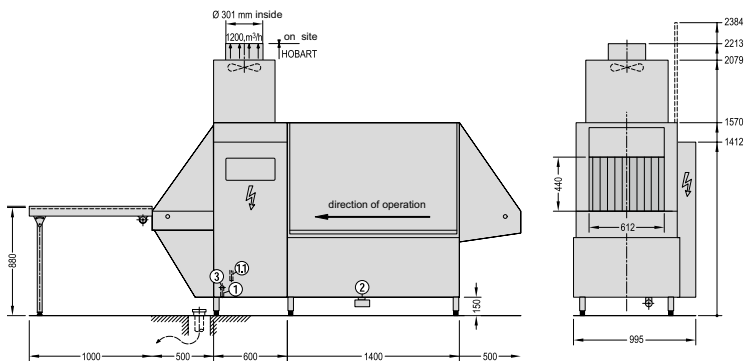
4 | TECHNICAL DATA

MODEL	FUX-C
Capacity/h	
Boxes and containers positioned across conveyor, trays and baking sheets up to 600 x 400 x 400 mm	150 / 300
Fresh water consumption per cycle litres	250
Tank volume litres	125
Total loading kW (without blow drying B)	29,8*
Heat output kW	
Wash tank	12/18
Heat recovery rinse booster and hot water connection (max. 60°C)	15
Rinse booster for cold water connection	36
Pump capacity in kW/(l/min)	1,5 (450) / 4,0 (900)

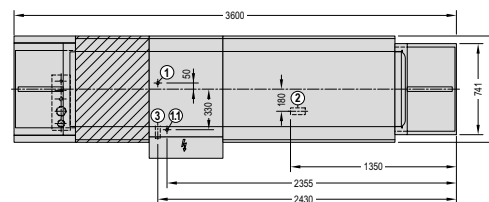
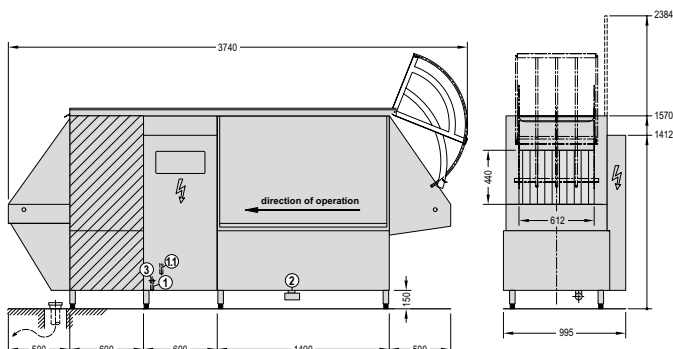
MODEL	FUX-C
Capacity/h	
Blow drying B (optional)	2 x 2,7 kW
Fuse in A	3 x 50
Nominal voltage in V/Hz/N-PE	400 / 50 / 3
Dimensions in mm	
Width	995
Depth	3.000
Height	1.570
Loading width	612
Loading height	440
Features	
Return slide	optional
Drain heat recovery	optional
Temperature display	optional
Noise level in db (A)	76

* With warm water connection 60°C or heat recovery

FUX Compact with Exhaust Hood and Exit Roller Conveyor



FUX Compact with Rack Turning Device (one-man operation) and blower



POWERFUL AND ECONOMICAL

Large numbers of containers and racks need to be cleaned every day at bakeries and butcher's shops. HOBART FUX-C ensures hygienic results for up to 300 racks per hour.

The compact FUX-C container washer

- saves up to 20% in water, and therefore chemicals and power
- saves up to 10,450 Euro per year in operating costs
- consume only 250 l water per hour

HOBART blow drying reduces water left on the washware by up to 90%, speeding up the drying process.

Look forward to high-performance washing with HOBART FUX-C!



WAREWASHING

COOKING

FOOD PREPARATION

WASTE TREATMENT

SERVICE

HOBART GMBH

Robert-Bosch-Straße 17

77656 Offenburg/GERMANY

Phone +49(0)781.600-28 20

Fax +49(0)781.600-28 19

email: info-export@hobart.de

www.hobart-export.com

EFFICIENT – RELIABLE – INNOVATIVE

Member of the *ITW* Food Equipment Group Europe

